

## HEATER REPAIR INSTRUCTION

### 1. Disconnection



*Remove the plug*



*Turn off the tap and disconnect the hose from the valve*



*Disconnect the drain hose*

### 2. Necessary Tools

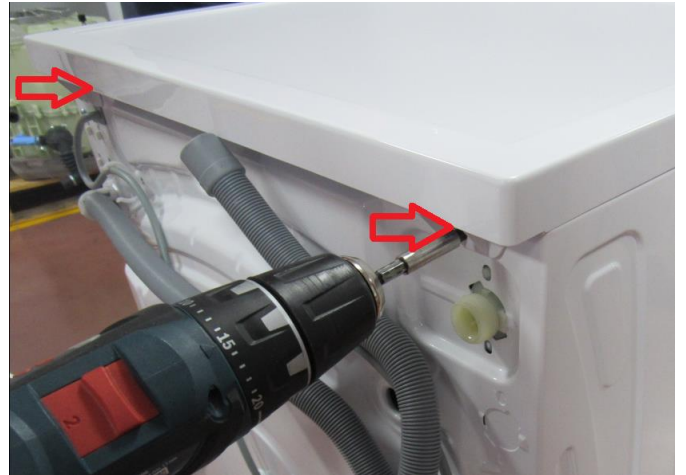


A. Plier

B. Flat head screwdriver

C. Ratchet Wrench with M8 head

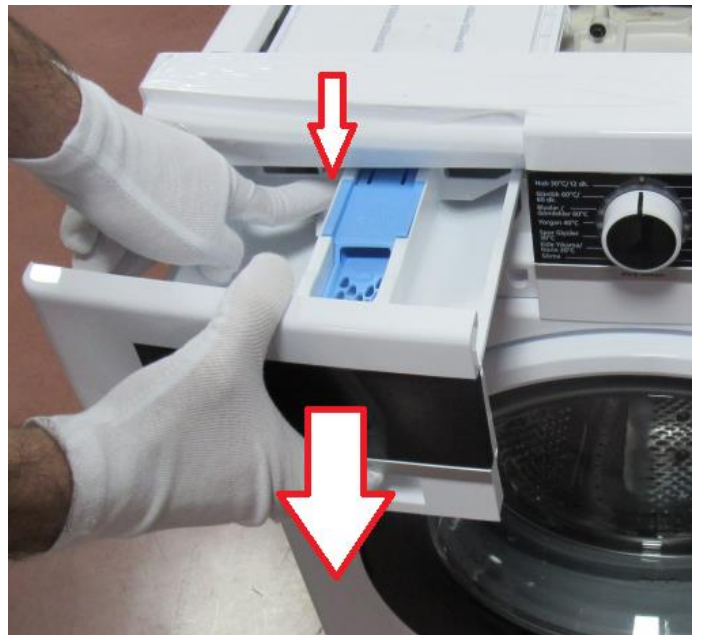
### 3. Disassembly Instructions



*Remove two screws that fix the top-plate at the back.*



*Push the top-plate back and pull it up.*

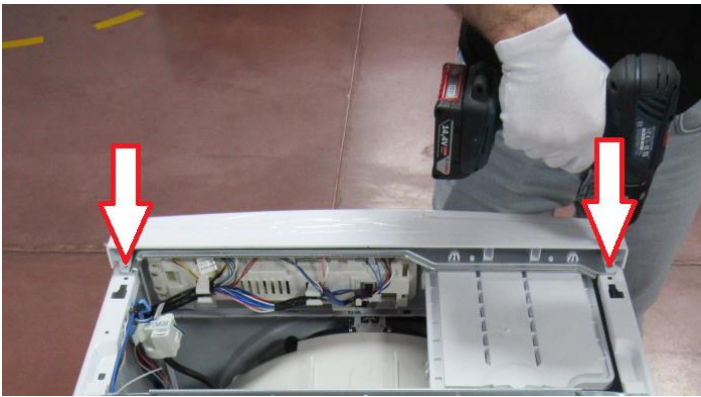


*While pressing siphon cover keep pulling drawer to remove it.*

## HEATER REPAIR INSTRUCTION



*Remove the screw which fixes the control panel to the front panel.*



*Remove two screws fixing control panel.*



*Remove the screw on support bracket and two screws fixing front panel to body*



*Remove the screw fixing twinjet elbow.*



*Remove the screws fixing the door lock.*

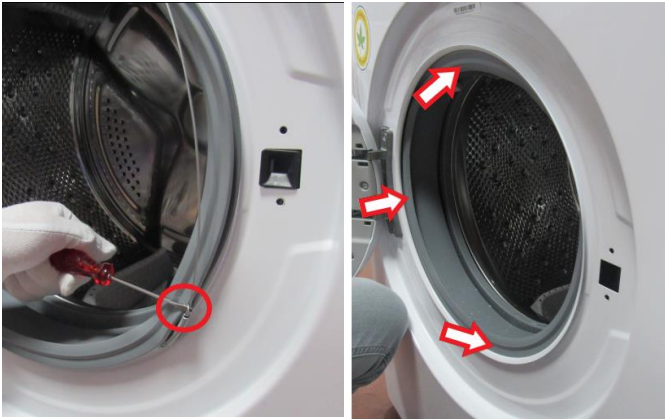


*Remove the screw and plastic part located under the pump cover*

## HEATER REPAIR INSTRUCTION



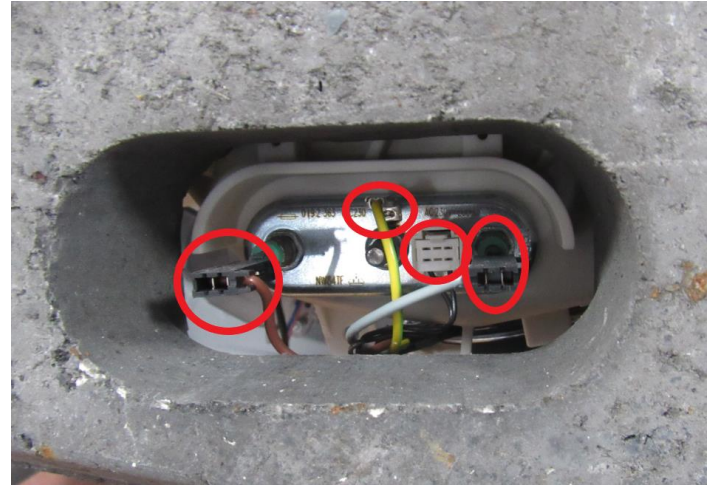
Remove the screw fixing the front panel at the bottom.



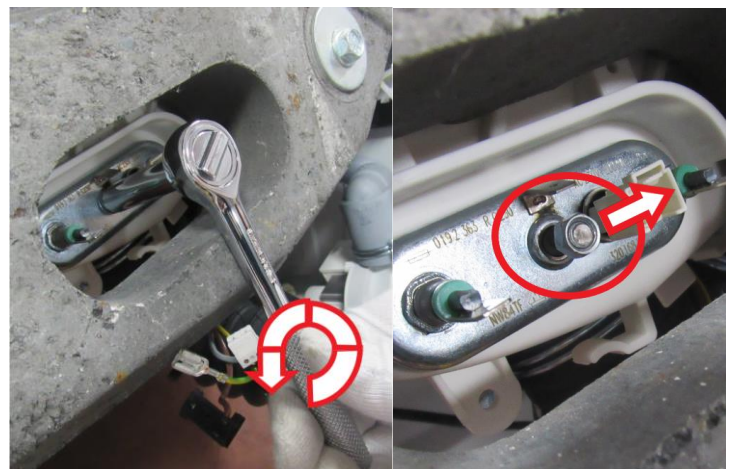
Remove the wire by using small screwdriver and push the seal to the inside



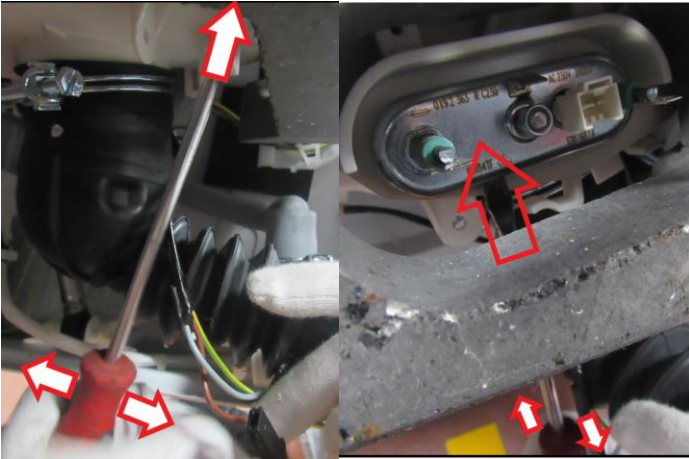
Pull up and remove the front panel.



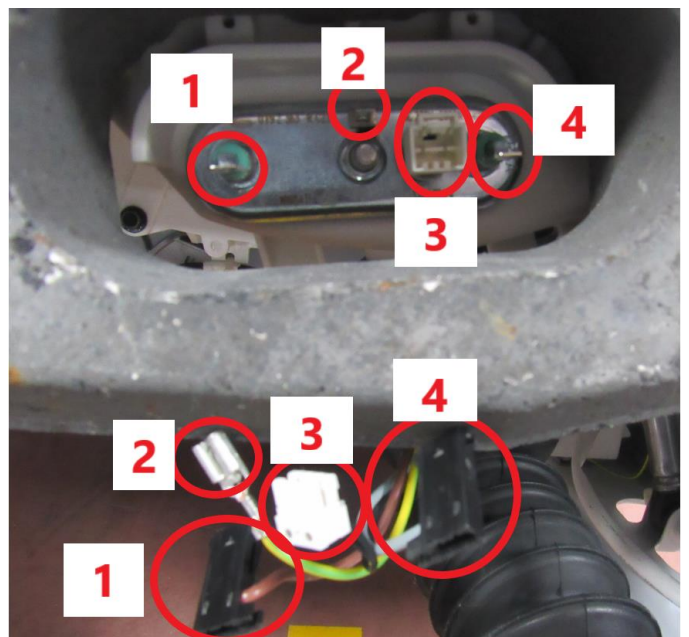
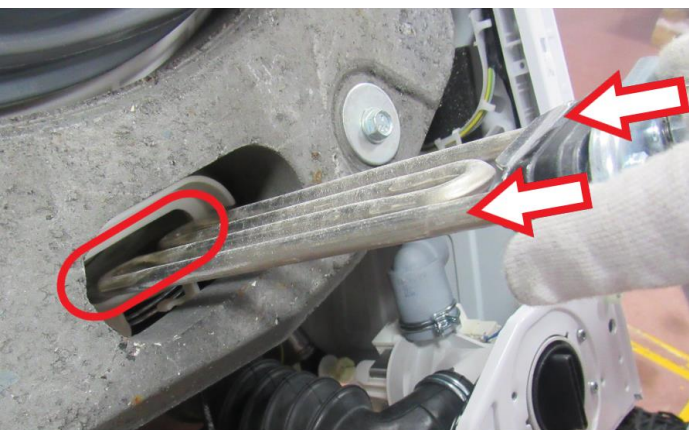
Remove the heater sockets



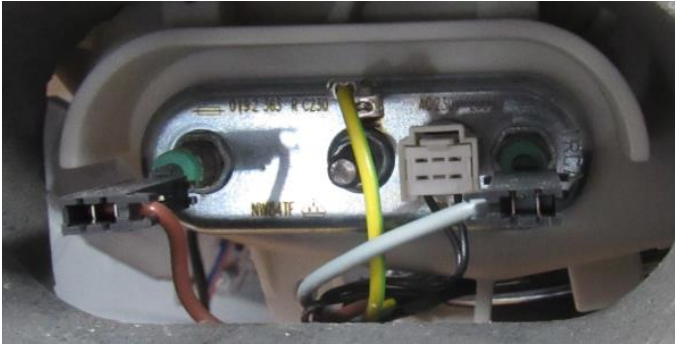
# HEATER REPAIR INSTRUCTION



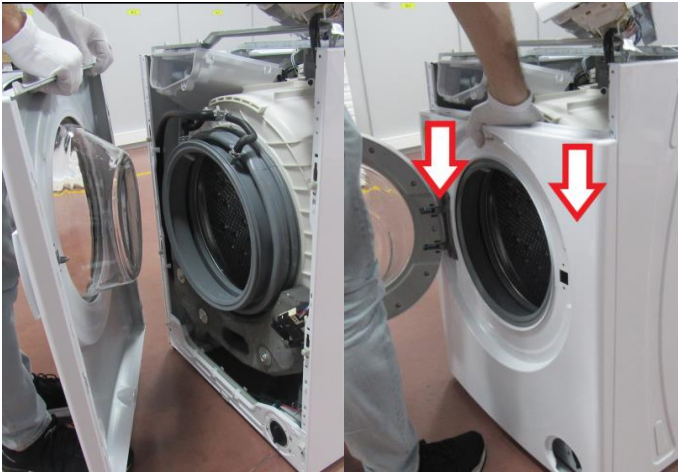
## 4. Assembly Instructions



## HEATER REPAIR INSTRUCTION



*Pull the tub bellow seal to the outside and assemble the wire by using small screwdriver*



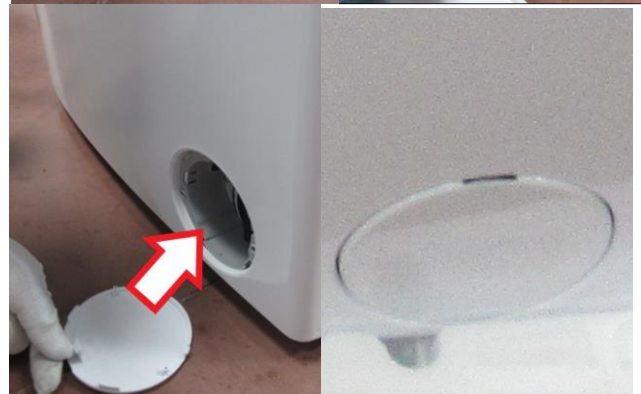
*Put the front panel to the cabinet and push down to set it*



*Tighten the screw fixing the front panel at the bottom*

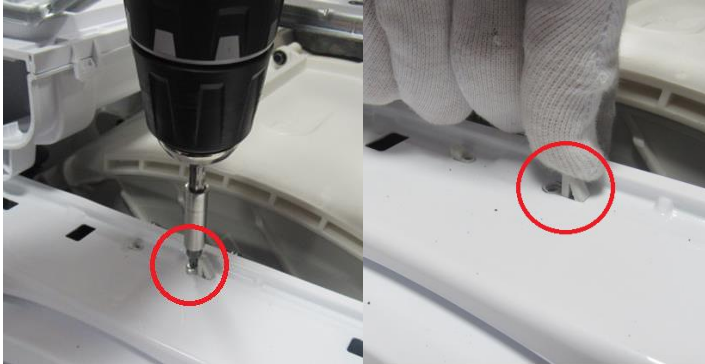


*Tighten the door lock screw*

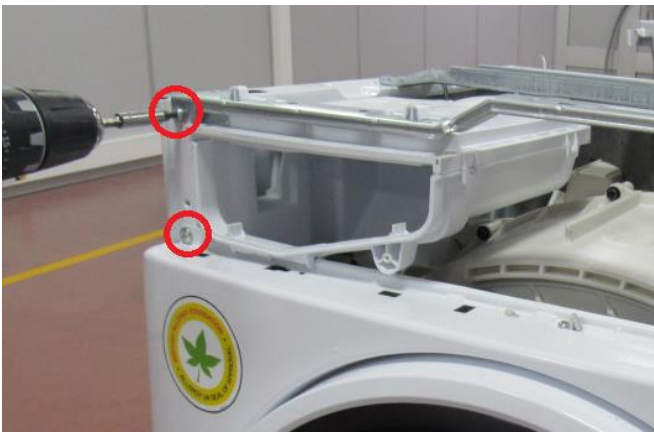


## HEATER REPAIR INSTRUCTION

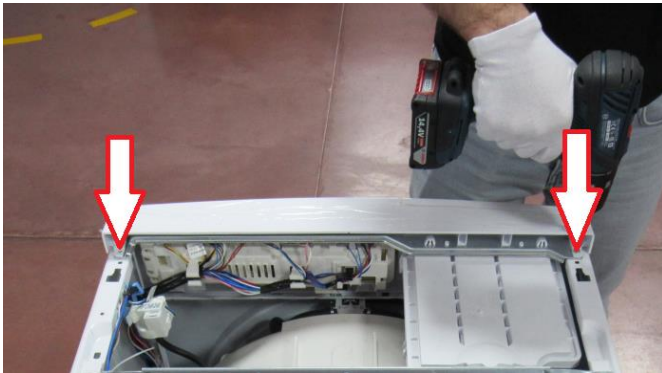
*Tighten the screw and plastic part located under the pump cover*



*Assemble the twinjet elbow to the front panel*



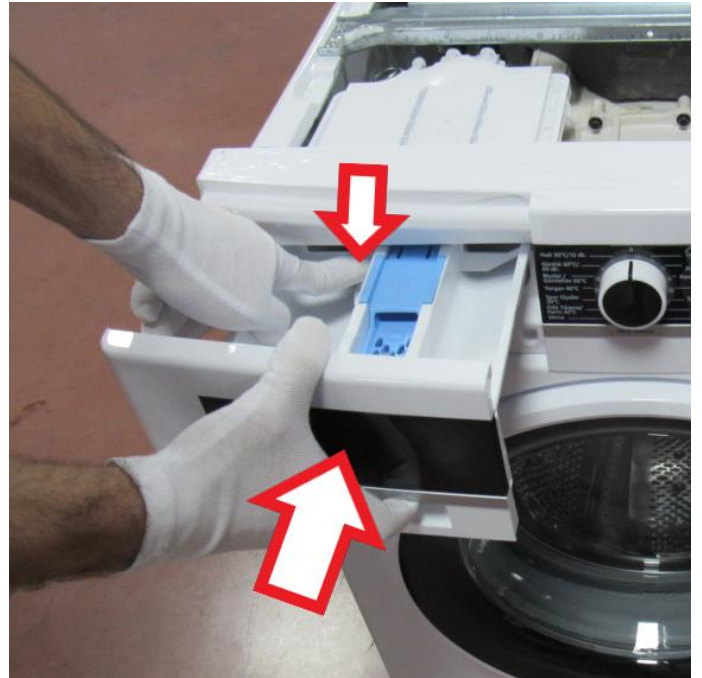
*Tighten the screw on support bracket and two screws fixing front panel to body*



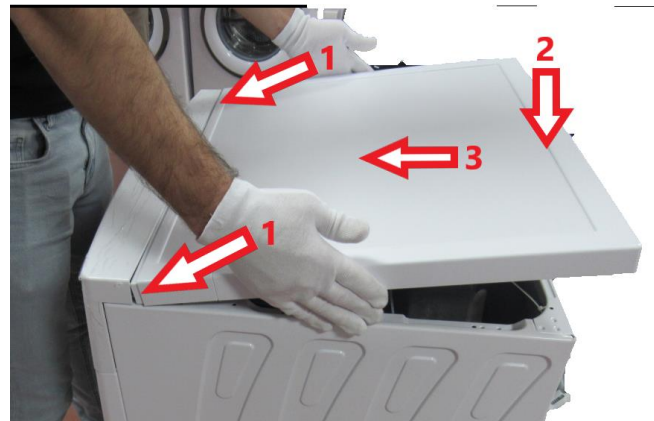
*Tighten two screws fixing control panel.*



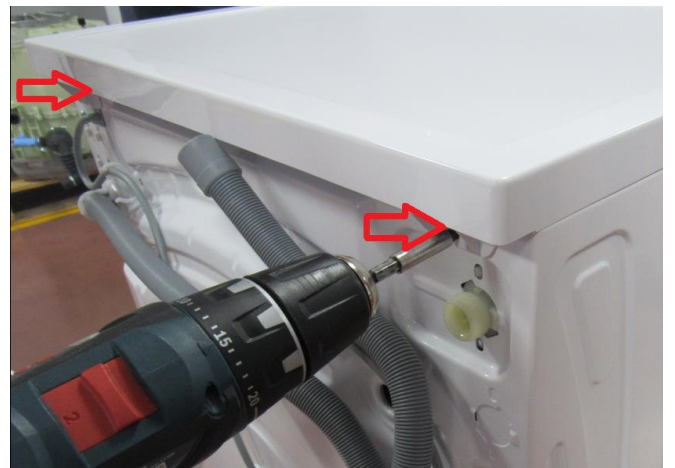
*Tighten the screw which fixes the control panel to the front panel.*



*While pressing siphon cover keep pushing drawer to fit it*



*Fit the upper tray according to movement above*



*Tighten two screws that fix the top-plate at the back.*