

REPLACEMENT PROCEDURE		Applicable models	EN
		General	
Part name	Door, Hinge ve Handle		

SAFETY PRECAUTIONS



Before any disassembly/repair operation make sure appliance is unplugged, water tap is closed and heating elements are cooled down. There is electrical shock, burning and flood risk.



Please replace whole cable group even in case there is any minor failure with cables / terminals / sockets. Never try to repair nor to solder cable group. It may cause smoke, ignition and there is major risk of electrical shock.



Straightly pull out or insert the terminals.
Do not twist it. It may be the cause of damage or ignition.



Always use insulator gloves to prevent injury by metal edges or to prevent electrical shock during electrical tests.

Work with uniforms having long sleeves to protect your arms from metal edges.



Always use original spare parts. You may harm appliance, end user, environment or yourself using untested and unapproved 3rd party spare parts.



Use right tools to prevent any wear or damage to components during assembly/disassembly.



Do not touch any rotating object with hand unless it stops completely. Slow rotation may also roll in your hands and cause injury.

REPLACEMENT PROCEDURE		Applicable models	EN
		General	
Part name	Door, Hinge ve Handle		



Rebuilding is prohibited. Do not rebuild machine parts and components when repairing service. It may be the cause of damage or ignition.

Necessary Tools



- A) Plier
- B) Flat head thin screwdriver
- C) Cordless screwdriver or classic screwdriver with torx head (T25)

1. Disconnection



Remove the plug

2) Disassembly Instructions

REPLACEMENT PROCEDURE		Applicable models	EN
		General	
Part name	Door, Hinge ve Handle		



2.1. Remove the wire by using small screwdriver and push the seal to the inside



2.2. Remove the door hinge screws by using a Tx25 head screwdriver



2.3. Remove the door



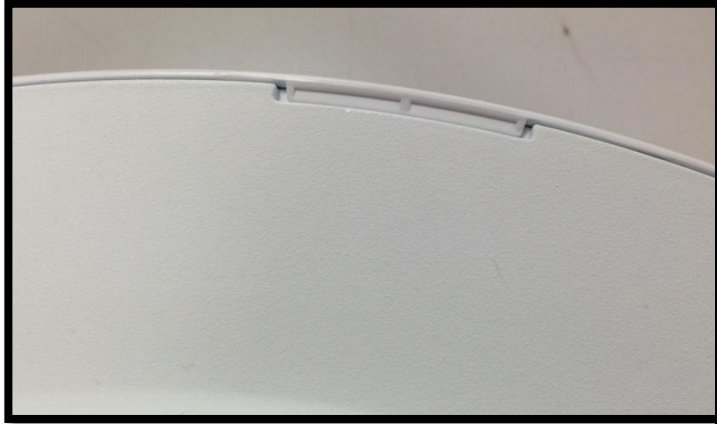
2.4. There is hinge support sheet behind the front panel. Please keep it stable while operation and do not forget to assemble it to the front panel.

Follow the hinge and handle changing instructions if needed after this step. If not required to replace the hinge and handle, you can skip to the door assembly section.

REPLACEMENT PROCEDURE		Applicable models	EN
		General	
Part name	Door, Hinge ve Handle		



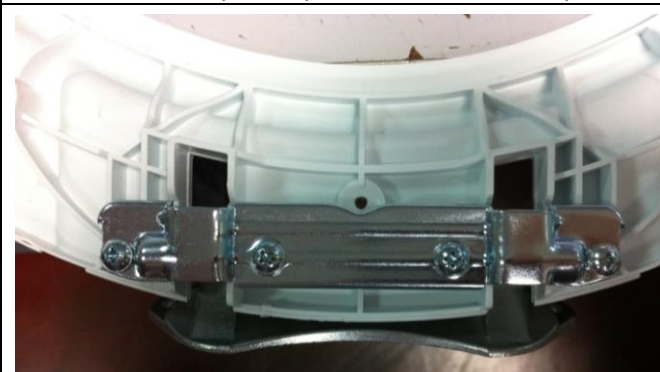
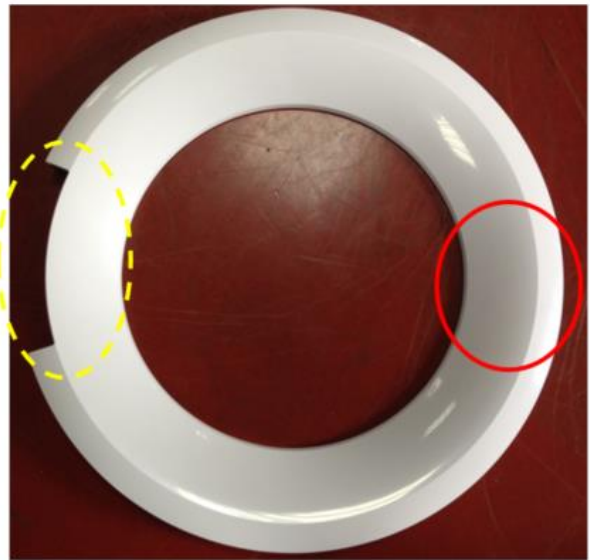
2.5. Remove the screws on the door, a number of the screws may change based on the door type.



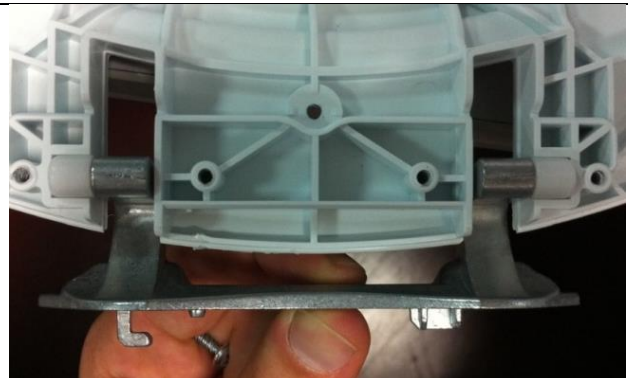
2.6. You can use a screwdriver to separate the front and back plastics from the area in the photo.



2.7. Remove the plastic parts as shown in the photo above.



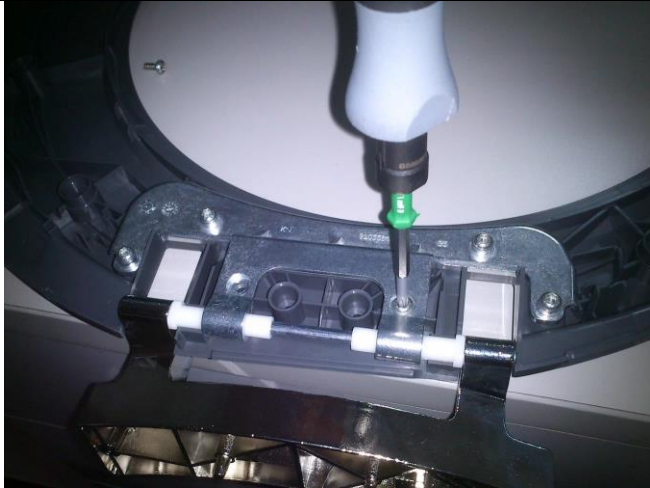
2.8. Remove the hinge sheet by screwdriver



2.9. Remove the hinge

IF THE PRODUCT HAS PLASTIC HINGE PLEASE FOLLOW THE INSTRUCTIONS BELOW

REPLACEMENT PROCEDURE		Applicable models	EN
		General	
Part name	Door, Hinge ve Handle		

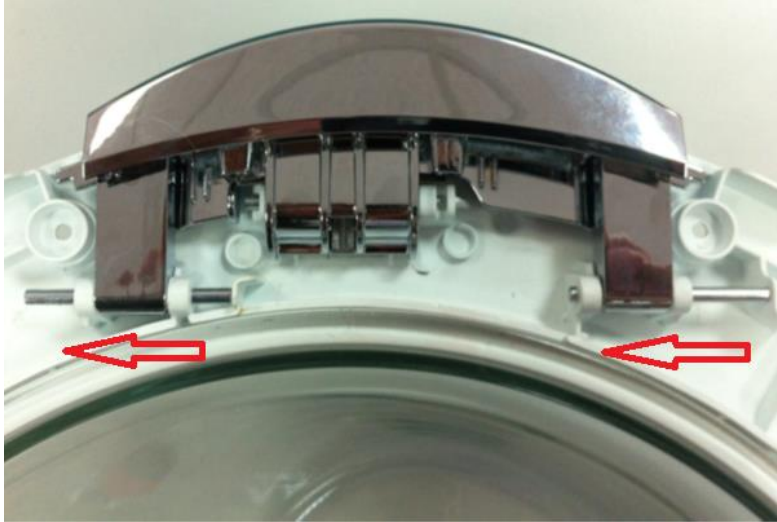


2.10. Hinge needs to be changed as a group for the door which has no handle.

2.11. Remove the screws and assemble the new part as a group.

DISASSEMBLY FOR THE OUTSIDE HANDLE

DISASSEMBLY FOR THE INSIDE HANDLE



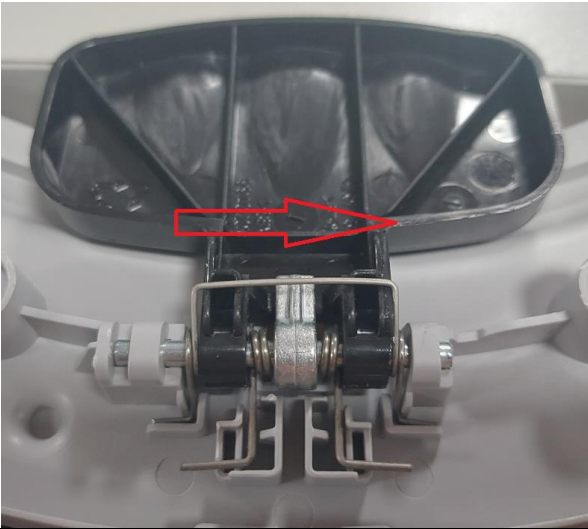
2.12. Remove the pins in the direction of the arrows



REPLACEMENT PROCEDURE		Applicable models	EN
		General	
Part name	Door, Hinge ve Handle		

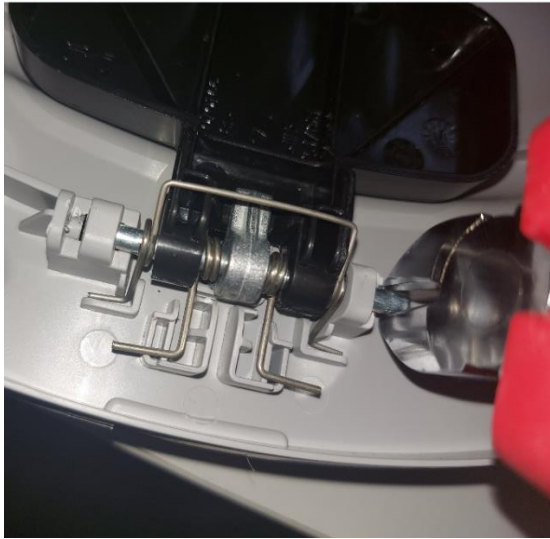
2.13. Remove the spring from the hosue (depends on the model)

INSIDE HANDLE DISASSEMBLY



2.14. Remove the pin in the direction of the arrow.

2.15. Use the knife or thin flat head screwdriver to remove the pin.



2.16. Take the pin by a plier. Then please take off the door handle and assemble the new one.

3. Assembly Instructions

Please pay attention to intructions according to the door handle type. If you have not dropped the hinge support sheet to inside the machine, you can skip the tub bellow seal disassembly step.

REPLACEMENT PROCEDURE		Applicable models	EN
		General	
Part name	Door, Hinge ve Handle		



3.1 Remove the wire by using small screwdriver and push the seal to the inside



3.2 Push the seal to the inside

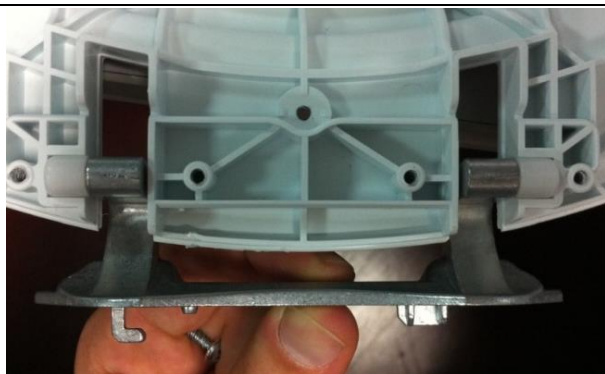


3.3 Take the hinge support sheet



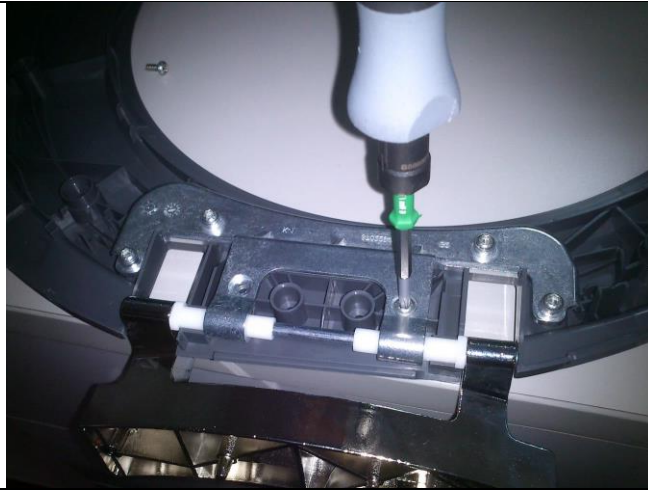
3.4 Fit the hinge support sheet to the housing on the front panel.

DOOR HINGE ASSEMBLY INSTRUCTIONS (Please follow the instructions which is related to your type)



3.5 Fit the door hinge to the housing on the door and place the hinge sheet over it. The screw number may change depends on the door model.

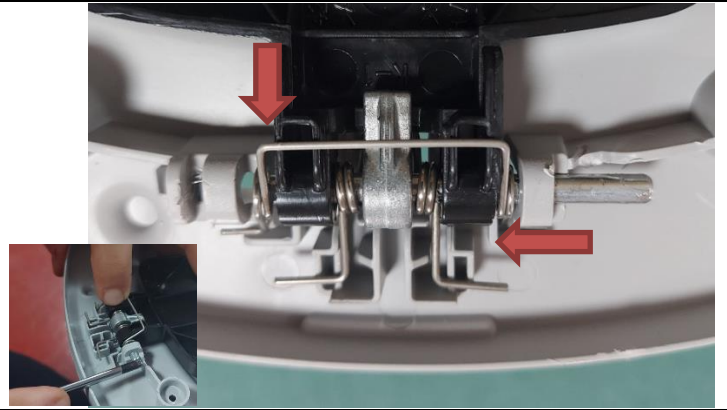
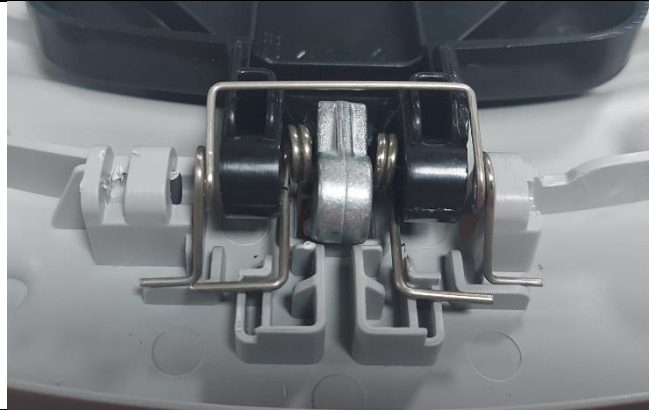
REPLACEMENT PROCEDURE		Applicable models	EN
		General	
Part name	Door, Hinge ve Handle		



3.6 If the hinge on your product is the same as the photo above, you must change it as a group since it is not possible to remove the pin.

DOOR HANDLE ASSEMBLY (Please follow the instructions suitable for your models)

Assembly Instructions for the handle form inside



3.7 Place the parts as like photo above

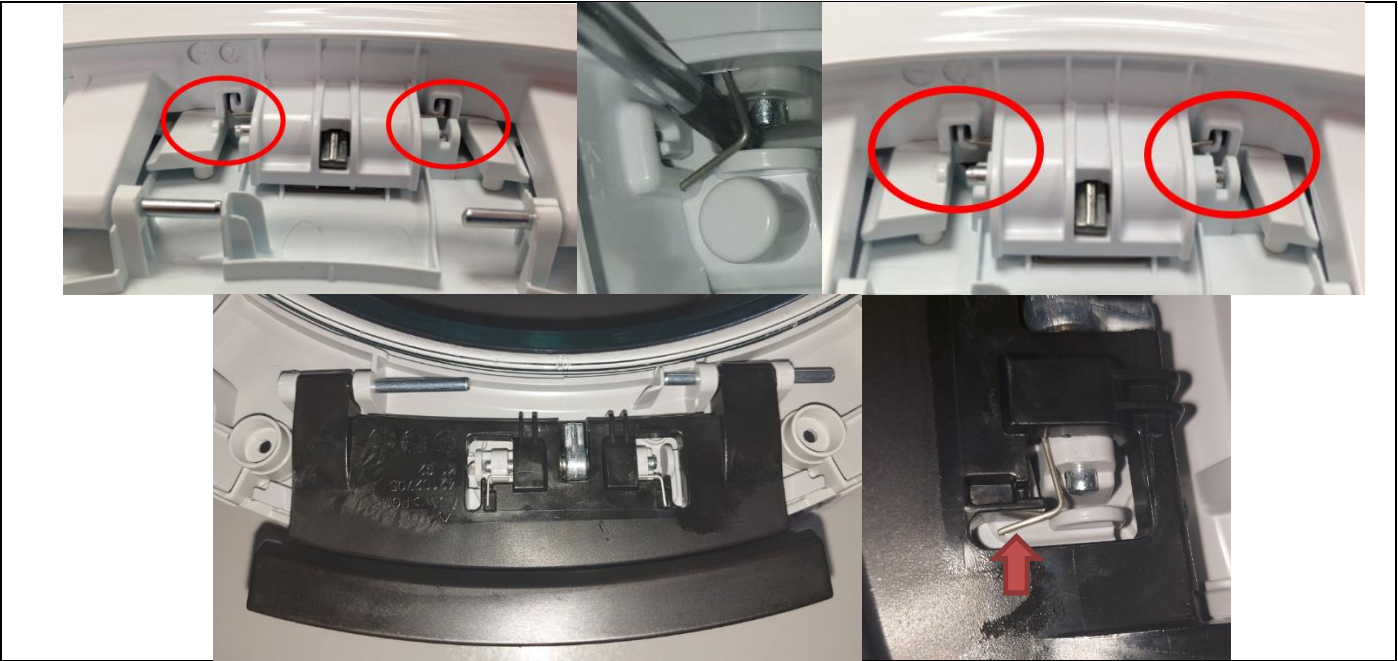
3.8 Fit the pin to the house and as shown in the photo above.

Dıştan tutamaklı Kapı Tutamağı Montajı

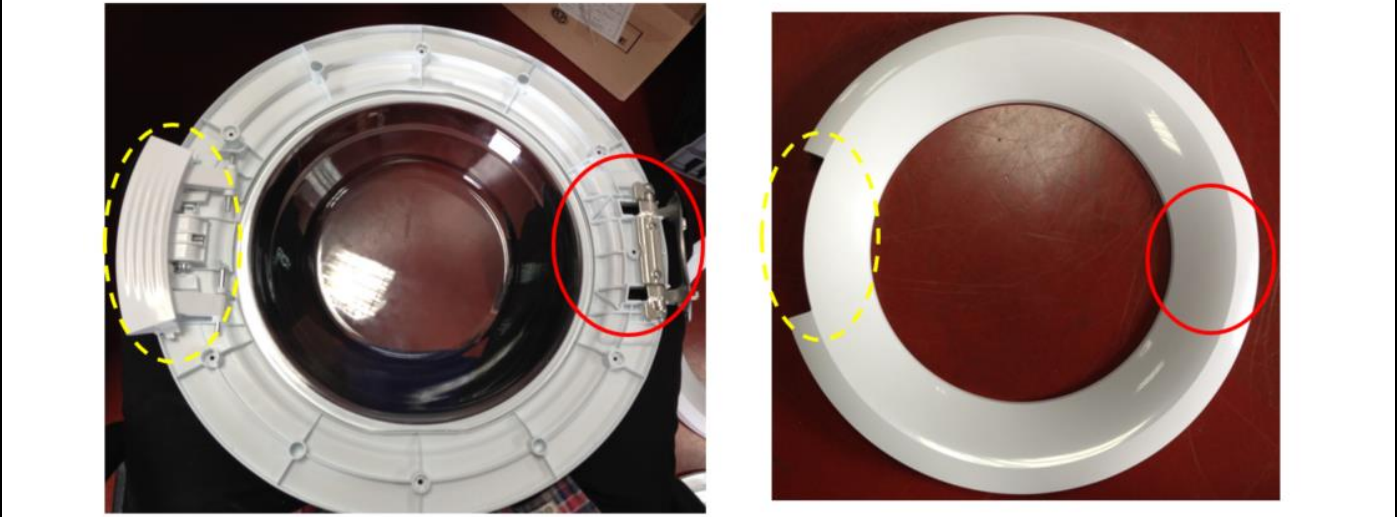


3.9 Please follow the instructions as like in the photos. Place the springs to the houses on the door frame.

REPLACEMENT PROCEDURE		Applicable models	EN
		General	
Part name	Door, Hinge ve Handle		



3.10 After fitting the handles, springs needs to be assemble to the handle as shown the photos above.



3.11 After the assembly of the handle or hinge, door outer plastic should be fitted. Please do not forget the assembly of the door glass too.

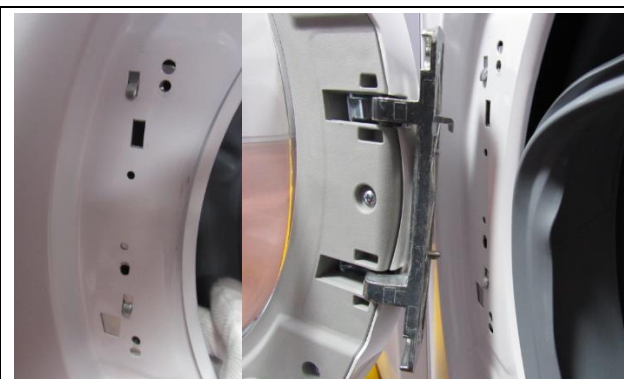


3.12 Be sure that all the parts have been fitted very well.



3.13 Assemble the all screws on the inside plastic part of the door.

REPLACEMENT PROCEDURE		Applicable models	EN
		General	
Part name	Door, Hinge ve Handle		



3.14 If the hinge support sheet had fallen inside to unit, please follow the related previous instructions to fit it to the front panel firstly. After that assemble the door to the front panel

3.15 Tighten the hinge screw by using a Tx25 screwdriver.



3.16 If the tub bellow seals had removed before, please assemble it again.

3.17 Place the seal spring and fit to the housing on the front panel.



3.18 Spring must be fitted very well as shown in the photo above.